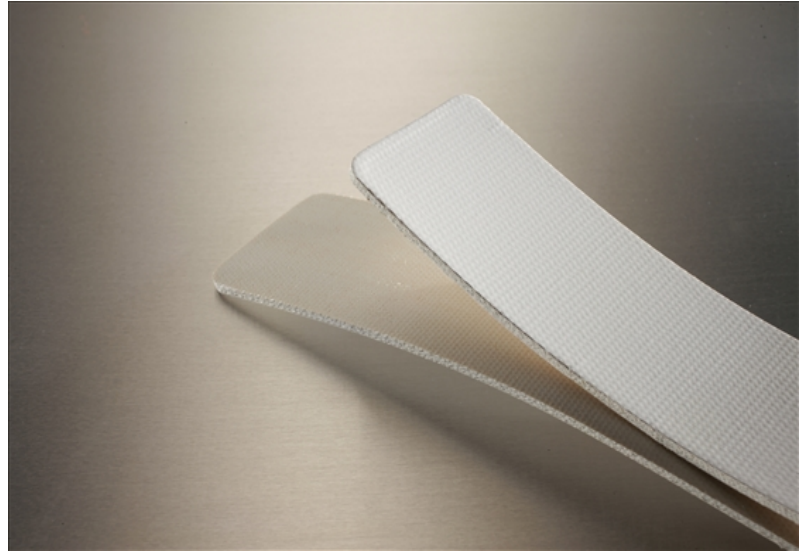


3W90-TEFLON

Food Grade



Cover

Top Color	White
Thickness	0.002" (0.1mm)
Material	PTFE
Pattern	Glossy
Durometer	

Carcass

Plies	3
Fabric	Polyester
Anti-static	No
Laterally Rigid	No
Pulley Side Material	Polyester

Weight

0.048 lbs./in.-ft. (2.8 kg/m²)

Maximum Width

60" (1.5m)

Overall Thickness

0.091" (2.3mm)

Minimum Pulley at 70°F

Min Pulley <180°	3" (76.2mm)
Min Pulley Reverse Bend	5" (127mm)

Contact Temperature Range

20°F to 300°F (-7°C to 149°C)	
Intermittent	Contact Mol Belting

Working Tension

Minimum	23-34 lbs./in. (4-6 N/mm)
Maximum	90 lbs./in. (15.8 N/mm)

Elongation

0.4% @ 23 lbs./in. (4 N/mm)
0.7% @ 34 lbs./in. (6 N/mm)
2% @ 90 lbs./in. (15.8 N/mm)

Coefficient of Friction

Mild Steel	0.3
S/S	0.32
UHMW	0.25

Splicing/Lacing Methods

Splicing	Angle Skive Splice
Lacing #1	Unibar #1 SP
Lacing #2	Alligator #7

Characteristics

FDA	Yes
Non-Marking	Yes
Flame Retardant	No
Release Characteristics	Excellent
Incline Conveying	No
Trough Conveying	No
Swan Neck Conveying	Poor
Metal Detectors (Dependent on Sensitivity)	Contact Mol Belting
Chemical Resistance	See Chart

Accessories

Edgecap	Yes
Guide	Yes
Cleats	No
Sidewall	No
Profile	No