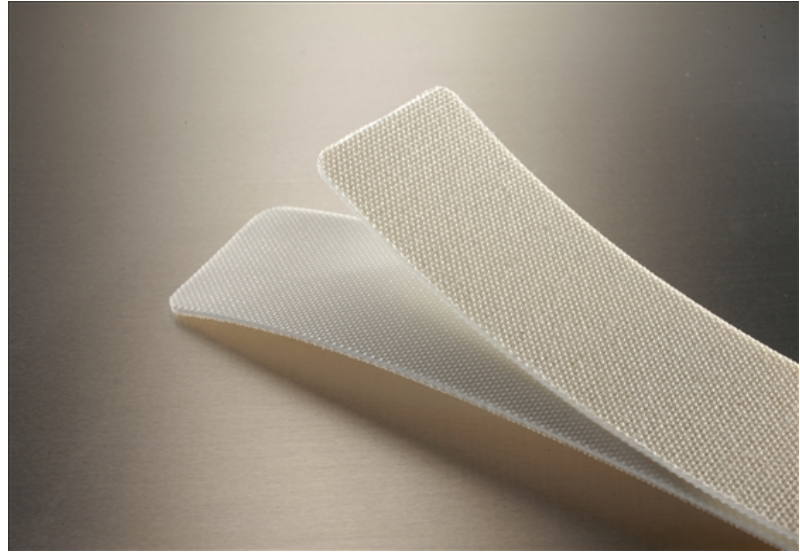


# 2SR0-0

## Food Grade



### Cover

Top Color	Beige
Thickness	
Material	PVC
Pattern	N/A
Durometer	

### Carcass

Plies	2
Fabric	Polyester/Cotton
Anti-static	No
Laterally Rigid	Yes
Pulley Side Material	Polyester

### Weight

0.035 lbs./in.-ft. (2.1 kg/m<sup>2</sup>)

### Maximum Width

78.75" (2m)

### Overall Thickness

0.071" (1.8mm)

### Minimum Pulley at 70°F

Min Pulley <180°	0.75" (19mm)
Min Pulley Reverse Bend	2" (50.8mm)

### Contact Temperature Range

5°F to 230°F (-15°C to 110°C)

Intermittent Contact Mol Belting

### Working Tension

Minimum	17-29 lbs./in. (3-5.1 N/mm)
Maximum	80 lbs./in. (14 N/mm)

### Elongation

0.4% @ 17 lbs./in. (3 N/mm)  
 0.7% @ 29 lbs./in. (5.1 N/mm)  
 2% @ 80 lbs./in. (14 N/mm)

### Coefficient of Friction

Mild Steel	0.22
S/S	0.24
UHMW	0.17

### Splicing/Lacing Methods

Splicing	Finger Step Finger Splice
Lacing #1	Unibar #36 SP
Lacing #2	Alligator #1

### Characteristics

FDA	Yes
Non-Marking	Yes
Flame Retardant	No
Release Characteristics	Good
Incline Conveying	No
Trough Conveying	No
Swan Neck Conveying	Fair
Metal Detectors (Dependent on Sensitivity)	Contact Mol Belting
Chemical Resistance	See Chart

### Accessories

Edgecap	No
Guide	Yes
Cleats	No
Sidewall	No
Profile	No