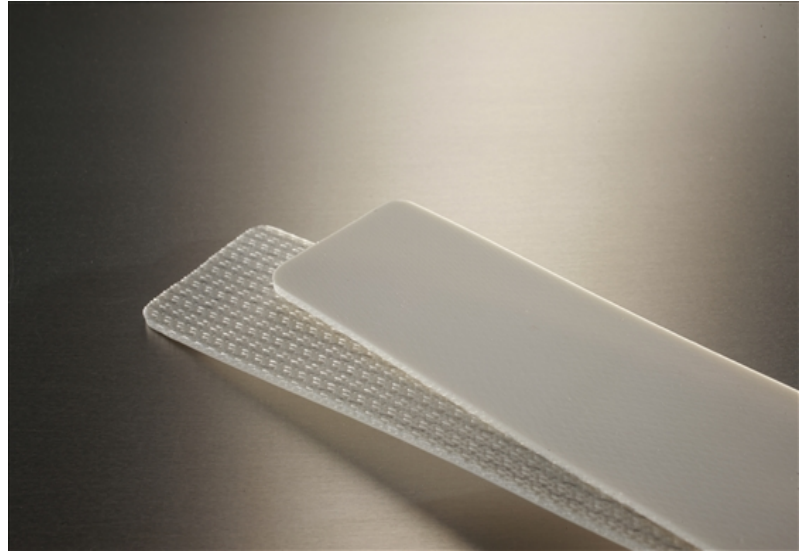


2AW5-0W-SP

Food Grade



Cover

Top Color	White
Thickness	0.02" (0.5mm)
Material	PVC
Pattern	Satin
Durometer	75 A

Carcass

Plies	2
Fabric	Polyester
Anti-static	Yes
Laterally Rigid	Yes
Pulley Side Material	Polyester Whisper

Weight

0.041 lbs./in.-ft. (2.4 kg/m²)

Maximum Width

126" (3.2m)

Overall Thickness

0.079" (2mm)

Minimum Pulley at 70°F

Min Pulley <180°	1" (25.4mm)
Min Pulley Reverse Bend	2.5" (63.5mm)

Contact Temperature Range

5°F to 210°F (-15°C to 99°C)

Intermittent Contact Mol Belting

Working Tension

Minimum	23-34 lbs./in. (4-6 N/mm)
Maximum	90 lbs./in. (15.8 N/mm)

Elongation

0.4% @ 23 lbs./in. (4 N/mm)
 0.7% @ 34 lbs./in. (6 N/mm)
 2% @ 90 lbs./in. (15.8 N/mm)

Coefficient of Friction

Mild Steel	0.25
S/S	0.27
UHMW	0.2

Splicing/Lacing Methods

Splicing	Finger Step Finger Splice
Lacing #1	Unibar #36 SP
Lacing #2	Alligator #1

Characteristics

FDA	Yes
Non-Marking	Yes
Flame Retardant	No
Release Characteristics	Good
Incline Conveying	No
Trough Conveying	No
Swan Neck Conveying	Fair
Metal Detectors (Dependent on Sensitivity)	Contact Mol Belting
Chemical Resistance	See Chart

Accessories

Edgecap	Yes
Guide	Yes
Cleats	Yes
Sidewall	Yes
Profile	Contact Mol Belting