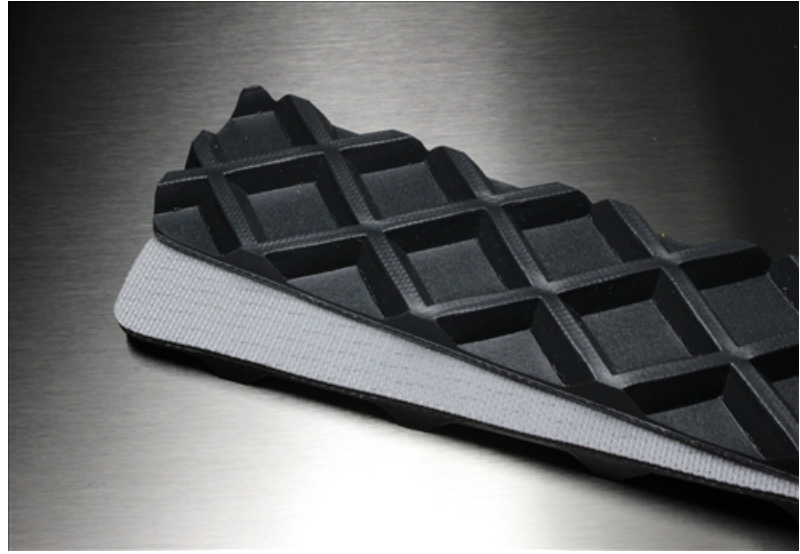


# 2AR56-0CH-WT

## Industrial Grade



### Cover

Top Color	Charcoal
Thickness	0.22" (5.6mm)
Material	PVC
Pattern	Waffle Top
Durometer	40 A

### Carcass

Plies	2
Fabric	Polyester
Anti-static	Yes
Laterally Rigid	Yes
Pulley Side Material	Polyester

### Weight

0.097 lbs./in.-ft. (5.7 kg/m<sup>2</sup>)

### Maximum Width

78.74" (2m)

### Overall Thickness

0.283" (7.2mm)

### Minimum Pulley at 70°F

Min Pulley <180°	3" (76.2mm)
Min Pulley Reverse Bend	3" (76.2mm)

### Contact Temperature Range

-5°F to 170°F (-21°C to 77°C)

Intermittent	Contact Mol Belting
--------------	---------------------

### Working Tension

Minimum	23-34 lbs./in. (4-6 N/mm)
Maximum	90 lbs./in. (15.8 N/mm)

### Elongation

0.4% @ 23 lbs./in. (4 N/mm)
0.7% @ 34 lbs./in. (6 N/mm)
2% @ 90 lbs./in. (15.8 N/mm)

### Coefficient of Friction

Mild Steel	0.22
S/S	0.24
UHMW	0.17

### Splicing/Lacing Methods

Splicing	Finger Step Finger Splice
Lacing #1	Alligator #1
Lacing #2	

### Characteristics

FDA	No
Non-Marking	Yes
Flame Retardant	No
Release Characteristics	
Incline Conveying	Yes
Trough Conveying	No
Swan Neck Conveying	
Metal Detectors (Dependent on Sensitivity)	Contact Mol Belting
Chemical Resistance	See Chart

### Accessories

Edgecap	No
Guide	Yes
Cleats	Yes
Sidewall	Yes
Profile	No