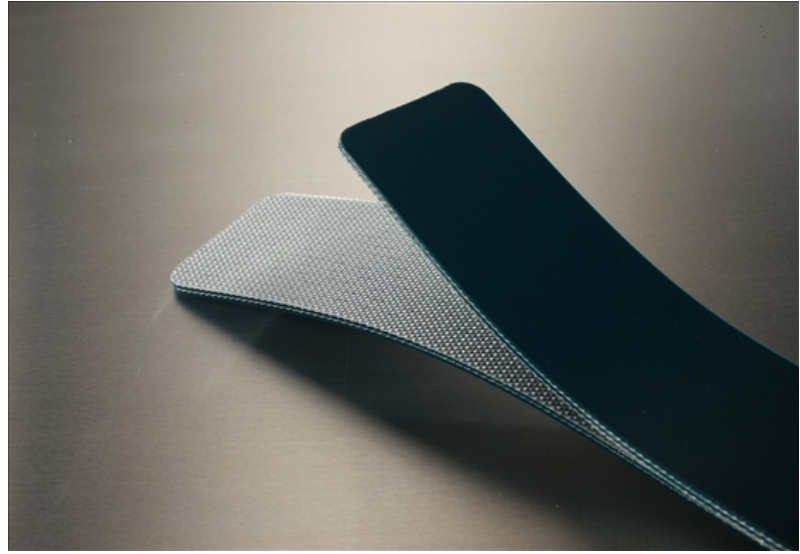


# 2AR10-0BG-U

## Food Grade



### Cover

Top Color	Blue/Green
Thickness	0.035" (0.9mm)
Material	TPU - Extruded
Pattern	Glossy
Durometer	92 A

### Carcass

Plies	2
Fabric	Polyester
Anti-static	Yes
Laterally Rigid	Yes
Pulley Side Material	Polyester

### Weight

0.042 lbs./in.-ft. (2.5 kg/m<sup>2</sup>)

### Maximum Width

126" (3.2m)

### Overall Thickness

0.091" (2.3mm)

### Minimum Pulley at 70°F

Min Pulley <180°	2" (50.8mm)
Min Pulley Reverse Bend	3" (76.2mm)

### Contact Temperature Range

-22°F to 175°F (-30°C to 79°C)

Intermittent Contact Mol Belting

### Working Tension

Minimum	23-34 lbs./in. (4-6 N/mm)
Maximum	90 lbs./in. (15.8 N/mm)

### Elongation

0.4% @ 23 lbs./in. (4 N/mm)  
 0.7% @ 34 lbs./in. (6 N/mm)  
 2% @ 90 lbs./in. (15.8 N/mm)

### Coefficient of Friction

Mild Steel	0.22
S/S	0.24
UHMW	0.17

### Splicing/Lacing Methods

Splicing	Finger Splice
Lacing #1	Unibar #1 SP
Lacing #2	Alligator #1

### Characteristics

FDA	Yes
Non-Marking	Yes
Flame Retardant	No
Release Characteristics	Fair
Incline Conveying	No
Trough Conveying	No
Swan Neck Conveying	Good
Metal Detectors (Dependent on Sensitivity)	Contact Mol Belting
Chemical Resistance	See Chart

### Accessories

Edgecap	Yes
Guide	Yes
Cleats	Yes
Sidewall	Yes
Profile	Contact Mol Belting