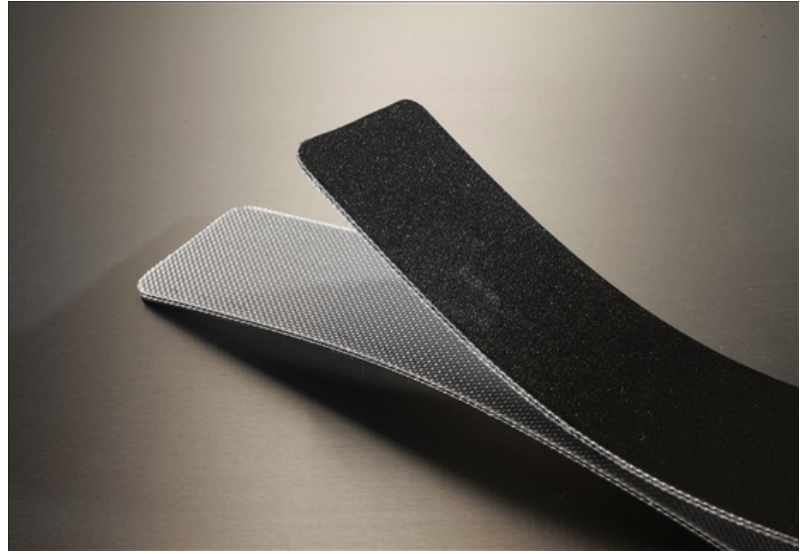


# 2ALR4-OBL-SP

## Industrial Grade



### Cover

Top Color	Black
Thickness	0.016" (0.4mm)
Material	PVC
Pattern	Satin
Durometer	75 A

### Carcass

Plies	2
Fabric	Polyester
Anti-static	Yes
Laterally Rigid	Yes
Pulley Side Material	Polyester

### Weight

0.037 lbs./in.-ft. (2.2 kg/m<sup>2</sup>)

### Maximum Width

118.1" (3m)

### Overall Thickness

0.071" (1.8mm)

### Minimum Pulley at 70°F

Min Pulley <180°	1" (25.4mm)
Min Pulley Reverse Bend	2.5" (63.5mm)

### Contact Temperature Range

5°F to 210°F (-15°C to 99°C)

Intermittent Contact Mol Belting

### Working Tension

Minimum	23-34 lbs./in. (4-6 N/mm)
Maximum	90 lbs./in. (15.8 N/mm)

### Elongation

0.4% @ 23 lbs./in. (4 N/mm)  
 0.7% @ 34 lbs./in. (6 N/mm)  
 2% @ 90 lbs./in. (15.8 N/mm)

### Coefficient of Friction

Mild Steel	0.22
S/S	0.24
UHMW	0.17

### Splicing/Lacing Methods

Splicing	Finger Step Finger Splice
Lacing #1	Unibar #36 SP
Lacing #2	Alligator #1

### Characteristics

FDA	No
Non-Marking	Yes
Flame Retardant	No
Release Characteristics	Good
Incline Conveying	No
Trough Conveying	No
Swan Neck Conveying	Fair
Metal Detectors (Dependent on Sensitivity)	Contact Mol Belting
Chemical Resistance	See Chart

### Accessories

Edgecap	No
Guide	Yes
Cleats	Yes
Sidewall	Yes
Profile	Contact Mol Belting