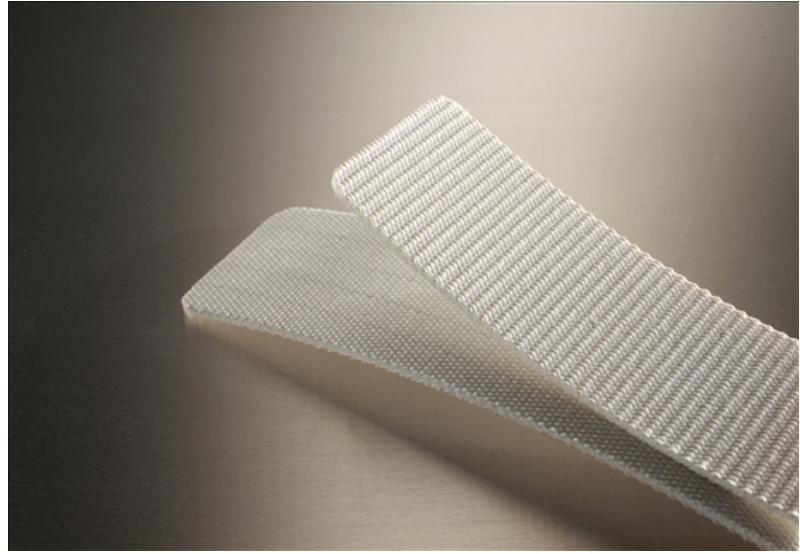


# 20-0W-A

## Food Grade



### Cover

Top Color	White
Thickness	
Material	PVC
Pattern	N/A
Durometer	

### Carcass

Plies	2
Fabric	Polyester/Cotton
Anti-static	No
Laterally Rigid	No
Pulley Side Material	Polyester

### Weight

0.04 lbs./in.-ft. (2.4 kg/m<sup>2</sup>)

### Maximum Width

84" (2.1m)

### Overall Thickness

0.091" (2.3mm)

### Minimum Pulley at 70°F

Min Pulley <180°	1.5" (38.1mm)
Min Pulley Reverse Bend	1.5" (38.1mm)

### Contact Temperature Range

5°F to 210°F (-15°C to 99°C)

Intermittent Contact Mol Belting

### Working Tension

Minimum	23-34 lbs./in. (4-6 N/mm)
Maximum	90 lbs./in. (15.8 N/mm)

### Elongation

0.4% @ 23 lbs./in. (4 N/mm)  
 0.7% @ 34 lbs./in. (6 N/mm)  
 2% @ 90 lbs./in. (15.8 N/mm)

### Coefficient of Friction

Mild Steel	0.22
S/S	0.24
UHMW	0.17

### Splicing/Lacing Methods

Splicing	Finger Step Finger Splice
Lacing #1	Unibar #36 SP
Lacing #2	Alligator #1

### Characteristics

FDA	Yes
Non-Marking	Yes
Flame Retardant	No
Release Characteristics	Good
Incline Conveying	No
Trough Conveying	No
Swan Neck Conveying	Fair
Metal Detectors (Dependent on Sensitivity)	Contact Mol Belting
Chemical Resistance	See Chart

### Accessories

Edgecap	No
Guide	Yes
Cleats	No
Sidewall	No
Profile	No