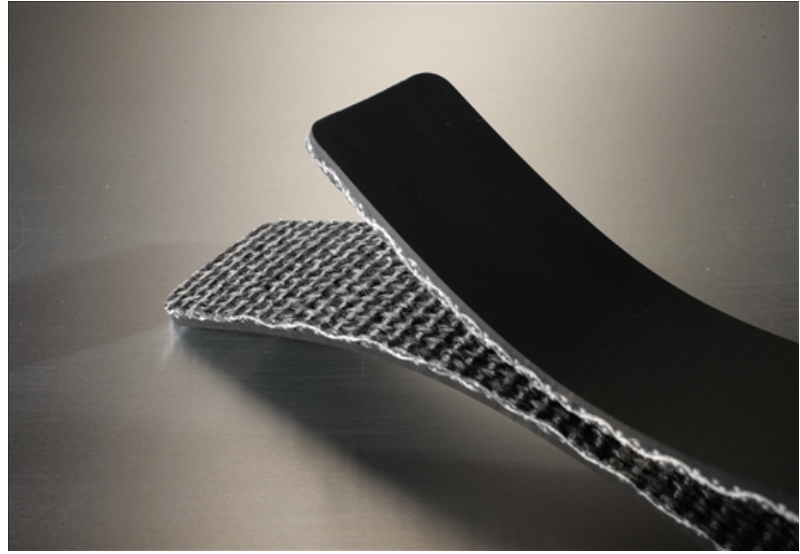


1BL150-COS

Industrial Grade



Cover

Top Color	Black
Thickness	0.039" (1mm)
Material	PVC
Pattern	Glossy
Durometer	80 A

Carcass

Plies	1
Fabric	Solid Woven Polyester
Anti-static	No
Laterally Rigid	No
Pulley Side Material	Brushed Solid Woven Polyester

Weight

0.089 lbs./in.-ft. (5.2 kg/m²)

Maximum Width

72" (1.8m)

Overall Thickness

0.173" (4.4mm)

Minimum Pulley at 70°F

Min Pulley <180°	3" (76.2mm)
Min Pulley Reverse Bend	3" (76.2mm)

Contact Temperature Range

40°F to 180°F (4°C to 82°C)

Intermittent Contact Mol Belting

Working Tension

Minimum	34-57 lbs./in. (6-10 N/mm)
Maximum	150 lbs./in. (26.3 N/mm)

Elongation

0.4% @ 34 lbs./in. (6 N/mm)
 0.7% @ 57 lbs./in. (10 N/mm)
 2% @ 150 lbs./in. (26.3 N/mm)

Coefficient of Friction

Mild Steel	0.3
S/S	0.32
UHMW	0.25

Splicing/Lacing Methods

Splicing	Finger Splice
Lacing #1	Flexco #125 RSS
Lacing #2	Unibar #2

Characteristics

FDA	No
Non-Marking	Yes
Flame Retardant	No
Release Characteristics	Fair
Incline Conveying	No
Trough Conveying	Yes
Swan Neck Conveying	Fair
Metal Detectors (Dependent on Sensitivity)	Contact Mol Belting
Chemical Resistance	See Chart

Accessories

Edgecap	No
Guide	Yes
Cleats	Yes
Sidewall	Yes
Profile	Contact Mol Belting