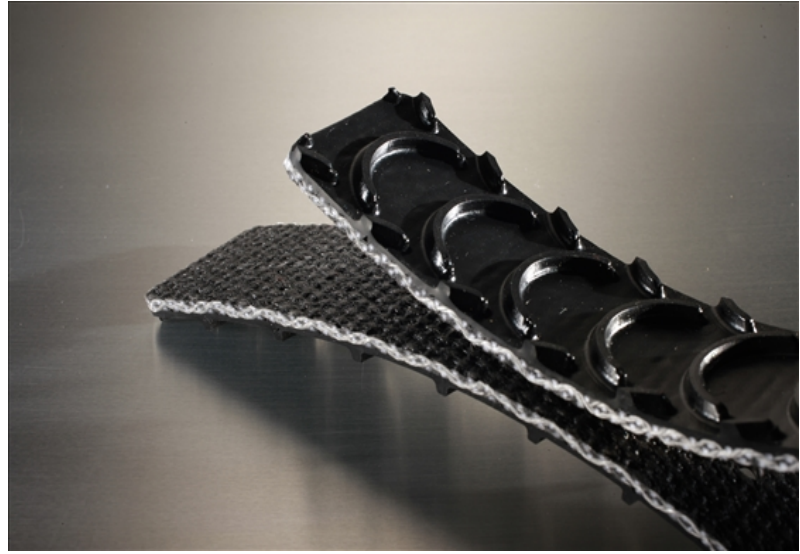


1BL120-COS-CP

Industrial Grade



Cover

| | |
|-----------|------------------|
| Top Color | Black |
| Thickness | 0.13" (3.3mm) |
| Material | PVC |
| Pattern | Crescent Profile |
| Durometer | 80 A |

Carcass

| | |
|----------------------|-------------------------------|
| Plies | 1 |
| Fabric | Solid Woven Polyester |
| Anti-static | No |
| Laterally Rigid | No |
| Pulley Side Material | Brushed Solid Woven Polyester |

Weight

0.07 lbs./in.-ft. (4.1 kg/m²)

Maximum Width

72" (1.8m)

Overall Thickness

0.224" (5.7mm)

Minimum Pulley at 70°F

| | |
|-------------------------|-------------|
| Min Pulley <180° | 2" (50.8mm) |
| Min Pulley Reverse Bend | 2" (50.8mm) |

Contact Temperature Range

40°F to 180°F (4°C to 82°C)

Intermittent Contact Mol Belting

Working Tension

| | |
|---------|-------------------------------|
| Minimum | 26-42 lbs./in. (4.6-7.4 N/mm) |
| Maximum | 120 lbs./in. (21 N/mm) |

Elongation

| |
|-------------------------------|
| 0.4% @ 26 lbs./in. (4.6 N/mm) |
| 0.7% @ 42 lbs./in. (7.4 N/mm) |
| 2% @ 120 lbs./in. (21 N/mm) |

Coefficient of Friction

| | |
|------------|------|
| Mild Steel | 0.3 |
| S/S | 0.32 |
| UHMW | 0.25 |

Splicing/Lacing Methods

| | |
|-----------|---------------|
| Splicing | Finger Splice |
| Lacing #1 | Unibar #1 SP |
| Lacing #2 | Alligator #1 |

Characteristics

| | |
|---|---------------------|
| FDA | No |
| Non-Marking | Yes |
| Flame Retardant | No |
| Release Characteristics | Good |
| Incline Conveying | Yes |
| Trough Conveying | Yes |
| Swan Neck Conveying | Fair |
| Metal Detectors (Dependent on Sensitivity) | Contact Mol Belting |
| Chemical Resistance | See Chart |

Accessories

| | |
|----------|-----|
| Edgecap | No |
| Guide | Yes |
| Cleats | No |
| Sidewall | Yes |
| Profile | No |