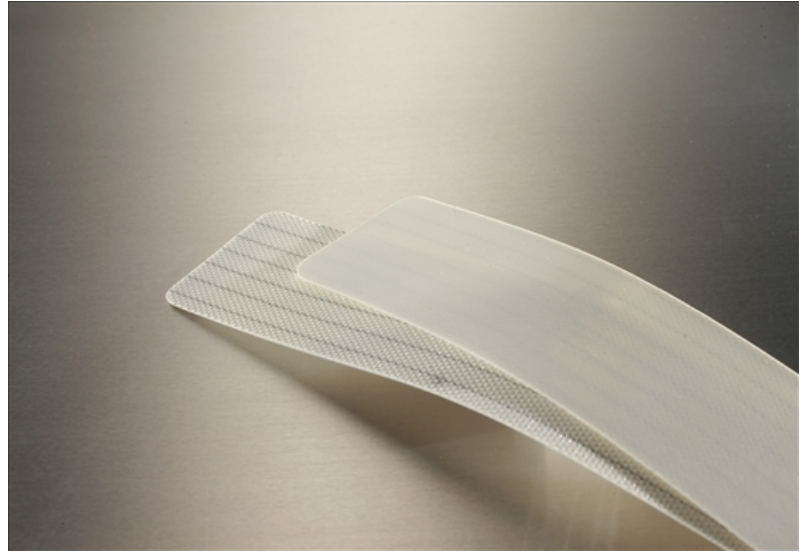


# 1AR3-0W-SP

## Food Grade



### Cover

Top Color	White
Thickness	0.012" (0.3mm)
Material	PVC
Pattern	Satin
Durometer	75 A

### Carcass

Plies	1
Fabric	Polyester
Anti-static	Yes
Laterally Rigid	Yes
Pulley Side Material	Polyester

### Weight

0.016 lbs./in.-ft. (0.9 kg/m<sup>2</sup>)

### Maximum Width

78.75" (2m)

### Overall Thickness

0.029" (0.7mm)

### Minimum Pulley at 70°F

Min Pulley <180°	0.25" (6.3mm)
Min Pulley Reverse Bend	1" (25.4mm)

### Contact Temperature Range

5°F to 210°F (-15°C to 99°C)

Intermittent          Contact Mol Belting

### Working Tension

Minimum	12-24 lbs./in. (2.1-4.2 N/mm)
Maximum	45 lbs./in. (7.9 N/mm)

### Elongation

0.4% @ 12 lbs./in. (2.1 N/mm)  
 0.7% @ 24 lbs./in. (4.2 N/mm)  
 2% @ 45 lbs./in. (7.9 N/mm)

### Coefficient of Friction

Mild Steel	0.22
S/S	0.24
UHMW	0.17

### Splicing/Lacing Methods

Splicing	Finger Splice
Lacing #1	Alligator #00
Lacing #2	

### Characteristics

FDA	Yes
Non-Marking	Yes
Flame Retardant	No
Release Characteristics	Good
Incline Conveying	No
Trough Conveying	No
Swan Neck Conveying	Poor
Metal Detectors (Dependent on Sensitivity)	Contact Mol Belting
Chemical Resistance	See Chart

### Accessories

Edgecap	No
Guide	Yes
Cleats	No
Sidewall	No
Profile	No